



# PASSION FOR PROCESSING

2023 Product Catalog



**pure**  
PROCESSING



## About Pure Processing

Founded in 2010, Pure Processing develops and manufactures ergonomic solutions for easy, fast, safe and effective medical device reprocessing. We help surgical, diagnostic, endoscopy and reprocessing departments protect their most important assets: their staff and instrumentation.

By applying our thorough understanding of regulatory guidance, ergonomics, and the instrument cleaning environment, we help providers achieve productive, consistent, compliant and comfortable cleaning processes that support optimal clinical outcomes for their patients.

Whether a technician works in a central sterile department, an outpatient surgical center, or a diagnostic or endoscopy department, the risks are the same. Pure Processing provides numerous practical solutions to eliminate or greatly reduce the injury risk in all these workspaces, and to help make instrument reprocessing compliant with regulations and highly productive.

PAGES	TABLE OF CONTENTS
4-6	FlexiPump Independent Flushing System & Accessories
7	Cleaning Chemistries
8-9	Anti-Fatigue Mats <i>New products!</i>
10-17	Healthcare Reprocessing Sinks & Accessories <i>New products!</i>
18-19	Sink Inserts & Accessories
20-21	Mobile Carts
22-25	Prep and Pack Tables and Accessories <i>New products!</i>
27-29	Inspection Technology and Accessories
30	Safety and PPE
31	Educational Resources



Keep up with industry news, updates and hot topics on our blog, the Reprocessing Report. Visit [www.pure-processing.com/blog](http://www.pure-processing.com/blog) to read our latest blogs, updated weekly!

# We are committed to delivering the highest quality products so that departments can deliver the best patient outcomes.

Our process always begins with you, and determining your specific needs, objectives and goals. Our full service approach carries over into assembly, in-servicing and training. Our products are assembled in our Carol Stream, Illinois, facility with the highest quality control measures. Whether it's building tube sets for the FlexiPump Independent Flushing System, pre-assembling reprocessing sinks, assembly tables, or modifying sink inserts, from start to finish, each of our products go through a rigorous quality control checklist to meet each customer's unique needs.

*"What I've found with Pure Processing, it is certainly customer-service focused and driven. It's frankly a level of service that, I have not seen nor been exposed to in quite some time. I cannot speak more favorably, or more highly about the service received thus far."*

- Steven, Sterile Processing Manager



*"When the time came to consider products for a new department I was helping design, [their] products were some of the first I considered. I knew the sales rep, I was familiar with the products and I understood the values and mission of the company that the products were coming from."*

- SPD Manager, WI



“  
 The FlexiPump made decontamination for cannulated instruments a lot easier for not just robotics, but for everything. That’s why I’m not having to flush with syringes anymore. It made things a lot easier for staff and decontamination.  
 ”

Matt  
 Central Sterile Manager

## FlexiPump™ Independent Flushing System



- Flush multiple instruments at once
- Adaptable to virtually all lumened instrumentation, including flexible and rigid scopes, robotics, laparoscopic, ocular, and more
- Provides hands-free, ergonomic pre-cleaning
- Pressure relief valves help protect delicate instruments during flushing

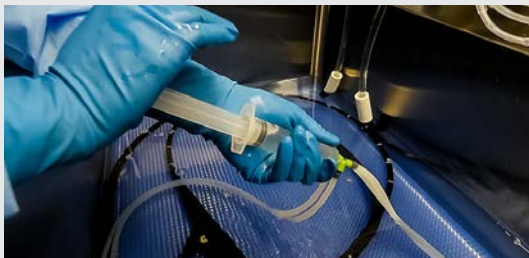
QUANTITY	PRODUCT ID#
1	PSFPS-01



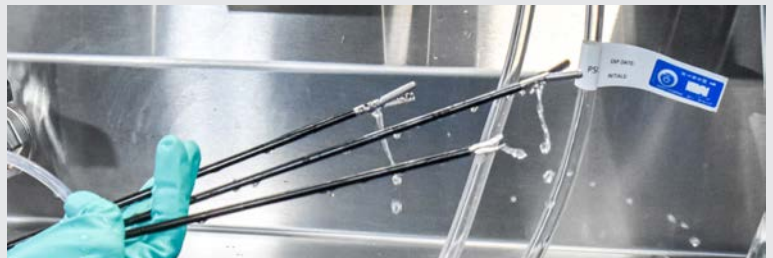
### FlexiPump Brackets

- Comfortably nests one, two or three FlexiPump Systems onto a back wall or pegboard
- Made from stainless steel

QUANTITY	PRODUCT ID#
1 (single bracket)	FP-SNBR
1 (double bracket)	FP-DBBR
1 (triple bracket)	FP-TRBR



**Syringe:** *thoroughly* inconsistent, inefficient and uncomfortable.



**FlexiPump™ Independent Flushing System:** *thoroughly* consistent, standardized and

## FlexiPump Irrigation Tube Sets

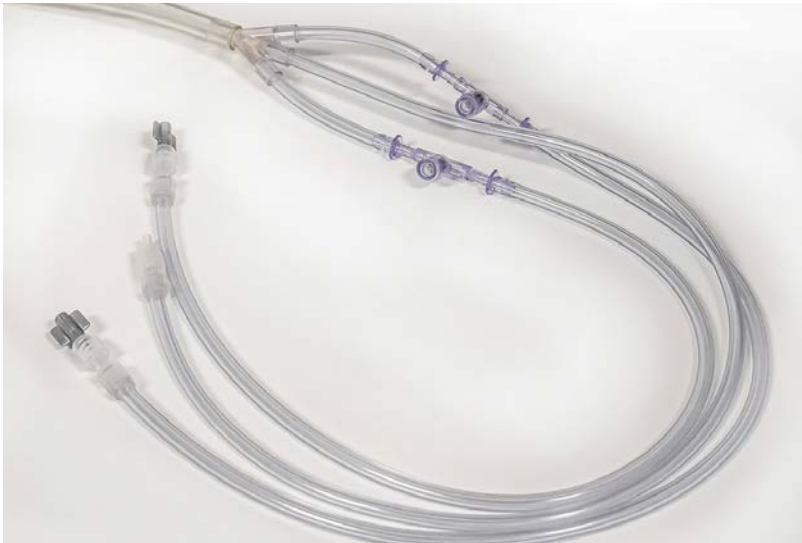
- Disposable tube sets for FlexiPump Independent Flushing System
- Available in 15 or 30 psi settings per device IFUs
- Available in 2, 3 or 5 lead options
- Available for purchase in six month or single, pre-assembled options
- Must be replaced every 30 days
- Pre-assembled options include 1 cap and 1 rotor

Tube sets should be replaced every 30 days



5 LEAD		
PSI	QUANTITY	PRODUCT ID#
15	1 box of 6	FXITS-0515psi6-PH
15	1 (pre-assembled)	FXITS-0515psi-PH-01

*For instruments smaller than 1mm in diameter only.*



3 LEAD		
PSI	QUANTITY	PRODUCT ID#
15	1 box of 6	FXITS-0315psi6-PH
15	1 (pre-assembled)	FXITS-0315psi-PH-01
30	1 box of 6	FXITS-0330psi6-PH
30	1 (pre-assembled)	FXITS-0330psi-PH-01



2 LEAD		
PSI	QUANTITY	PRODUCT ID#
15	1 box of 6	FXITS-0215psi6-PH
15	1 (pre-assembled)	FXITS-0215psi-PH-01
30	1 box of 6	FXITS-0230psi6-PH
30	1 (pre-assembled)	FXITS-0230psi-PH-01



Rubber Cup Adapter



Female-to-female



XL Slip Tip



End cap

### FlexiPump Accessory Kit

- Includes 50 XL Slip Tips, 25 End Caps, 20 Female to Female Luers, and 5 Cup Adapters
- Attaches to instruments not adaptable with a male luer lock on a syringe, including robotics, ocular instruments, and reamers

QUANTITY	PRODUCT ID#
1	ACC-KIT

### Individual Adapter Packages

QUANTITY	PRODUCT ID#
Rubber Cup Adapters (QTY 100)	RCA-100
End Caps (QTY 100)	ENDCAPS-100
XL Slip Tips (QTY 100)	XLSLIP-100



### FlexiPump Cap

QUANTITY	PRODUCT ID#
1 pack of 10	FLX-CAP-PH



### FlexiPump Rotor

QUANTITY	PRODUCT ID#
1 pack of 10	FLX-ROTOR-PH



### TimeStrip® Time Indicators

- Timestrip® Time Indicators offer a helpful visual reminder of service and maintenance schedules for consumable components

QUANTITY	PRODUCT ID#
100 (1 week)	TM-1W
100 (1 month)	TM-1M
100 (3 month)	TM-3M
100 (6 month)	TM-6M
100 (12 month)	TM-12M



### FlexiPump Ceramic Weight and Strainer

- Anchors the drop-down tube of FlexiPump tube set beneath water

1 pack of 10	FPCW-10
--------------	---------



### FlexiPump Power Supply

1	FPPS-01
---	---------



## PureChannel Flush™ Touch-less Auto Dispenser

- Automated, hands-free enzymatic dispenser to reduce chemical handling and prevent under- and over-dosing, while providing a dosage readout and temperature gauge

QUANTITY	PRODUCT ID#
1	PCFTAD-01

## PureChannel Flush Instrument Channel Cleaner and Foam



- A triple enzyme surfactant formulation that is designed for soaking and flushing medical devices with hard-to-clean narrow channels
- Dilutes at 1/4 oz. per gallon
- Highly effective as both a liquid and foam
- Easy to use with the FlexiPump Independent Flushing System, in sonic cleaners, or for manual cleaning in a sink

QUANTITY	PRODUCT ID#
1 case (12, 32 oz. bottles)	PCF-32oz
1 case (4, 1 gallon bottles)	PCF-08



## ProSpray™ Surface Disinfectant

- One step ready-to-use disinfectant/cleaner
- Safe for use on electronic panels, PureStation Sink Inserts, and FlexiPump tubing
- Sample kits per request*

*ProSpray products are approved by the EPA for inclusion in List N: Disinfectants for use against SARS-CoV-2 (COVID-19).*

QUANTITY	PRODUCT ID#
1 case (15, 24 oz. bottles)	PSC240-1
1 case (4, 1 gallon bottles)	PSC128-1



## Weiman Stainless Steel Cleaner

- Weiman Stainless Steel Cleaner shines stainless steel equipment with a streak-free shine, while repelling fingerprints and dust.

QUANTITY	PRODUCT ID#
1 case (6, 22 oz. trigger bottles)	WSST
1 box (4 packs of 30 wipes)	WSSW
1 case (6, 17 oz. aerosol bottles)	WSSA



## Micro-Scientific® Cuts-It® Gel

- Specially formulated to safely remove blood, fat, tissue and body fluids from surgical instruments and equipment. The unique chemical properties penetrate and loosen bioburden and keep it from drying onto instruments.

QUANTITY	PRODUCT ID#
1 case (12, 24 oz. bottles)	M60005



## Micro-Scientific Goo Gone® Topical and Surface Adhesive Remover

- Removes tape and adhesives completely and safely from instruments, equipment and containers. Compatible with all metals.

QUANTITY	PRODUCT ID#
1 case (12, 16 oz. bottles)	R6A

## GelPro™ NewLife Eco-Pro Anti-Fatigue Mats

- Durable floor mats with a high-traction bottom, low-profile edges that prevent tripping, and easy-to-clean water-resistant matte surfaces
- Includes yellow stripe to indicate beveled edge

QUANTITY	PRODUCT ID#
1 (20" x 32")	GPAFM20x32
1 (20" x 48")	GPAFM20x48
1 (20" x 72")	GPAFM20x72
1 (24" x 36")	GPAFM24x36
1 (36" x 60")	GPAFM36x60



Cart washer safe

**NEW**

## GelPro Work Flow Basin Mats

- Label sink basins with their appropriate reprocessing step, and keep tasks separated according to guideline recommendations
- Provide ergonomic relief from long periods of standing at the sink



Cart washer safe

QUANTITY	PRODUCT ID#
1 (20" x 32"), Soak Mat	BGPAFM20x32-SK
1 (20" x 32"), Wash Mat	BGPAFM20x32-WS
1 (20" x 32"), Rinse Mat	BGPAFM20x32-RS
1 (20" x 32"), Final Rinse Mat	BGPAFM20x32-FS

pure-processing.com Anti-Fatigue Mats

## Black Only GelPro New Life Eco-Pro Anti-Fatigue Mats

QUANTITY	PRODUCT ID#
1 (20" x 32")	BGPAFM20x32
1 (20" x 48")	BGPAFM20x48
1 (20" x 72")	BGPAFM20x72
1 (24" x 36")	BGPAFM24x36
1 (36" x 60")	BGPAFM36x60

Cart washer safe





## GelPro OR Anti-Fatigue Mats

- Anti-fatigue mats for operating, sterile processing, and surgical spaces, with traction for surgical booties and anti-bacterial and anti-microbial properties



COLOR	QUANTITY	PRODUCT ID#
Columbia Blue	(1) 18" x 24"	GPMM18x24-B
Columbia Blue	(1) 20" x 32"	GPMM20x32-B
Columbia Blue	(1) 20" x 48"	GPMM20x48-B
Columbia Blue	(1) 30" x 72"	GPMM30x72-B
Red	(1) 18" x 24"	GPMM18x24-R
Red	(1) 20" x 32"	GPMM20x32-R
Red	(1) 20" x 48"	GPMM20x48-R
Red	(1) 30" x 72"	GPMM30x72-R

## GelPro Medical Disposable Mats

- One-time use, disposable floor mats for added ergonomics in work spaces and step stools

QUANTITY	PRODUCT ID#
1 case (5, 13" x 17" mats)	GPSS-13x17-5
1 case (5, 20" x 30" mats)	GPSS-20x30-05



## Fixate™ Anti-Fatigue Mat Gel Pads

- Great to place under mats to prevent slipping

QUANTITY	PRODUCT ID#
1 pack of 10	AFM-FGP-10





### PureSteel™ Healthcare Reprocessing Sinks

- Customizable, complete-solution sink engineered around instrument reprocessing
- Electric push button allows precise, personal height adjustment; two buttons on each sink
- Ergonomic, slanted wrist edges on edge of sink basin remove pinch points during reprocessing
- Optional posterior back wall to organize cleaning accessories; adjusts up & down as the sink adjusts height
- Open configuration storage shelf underneath the sink raises and lowers to allow mopping and cleaning, and raise items for staff
- Adheres to industry guidelines for reprocessing and ergonomics
- Standard sizes: 96", 108", or 120"
- Custom sizes available



## PureSteel™ EZ Hinge™ Pegboards

- Customizable, complete-solution sink engineered around instrument reprocessing
- Electric push button allows precise, personal height adjustment; two buttons on each sink
- Ergonomic, slanted wrist edges on edge of sink basin remove pinch points during reprocessing
- Optional posterior back wall to organize cleaning accessories; adjusts up & down as the sink adjusts height
- Open configuration storage shelf underneath the sink raises and lowers to allow mopping and cleaning, and raise items for staff
- Adheres to industry guidelines for reprocessing and ergonomics
- Standard sizes: 96", 108", or 120"
- Custom sizes available

Patent pending on EZ Hinge™ Pegboards.



Easily clean both behind and on hard-to-reach areas of equipment



Contact us for a consultation

877.718.6868

sales@pure-processing.com

## PureSteel Endoscopy Sinks

- Created with flexible & rigid endoscope reprocessing in mind
- Customizable lengths, basin configurations, depths, and more allow sinks to accommodate smaller reprocessing areas
- All the features & accessories offered for sterile processing sinks, but with additional scope reprocessing accessories available:
  - Leak tester shelves
  - Heightened task light magnification
  - Built-in LED basin lighting
  - Solid back walls are easy to clean
  - Temperature gauges to indicate solution temperatures
- Standard & custom sizes available

### PureSteel™ SCOPE BUDDY™ PLUS Shelf

QUANTITY	PRODUCT ID#
1	PS-SLF-SBP



Leak tester and Scope Buddy+ shelves to organize cleaning accessories off counters



Visit our website to learn more!

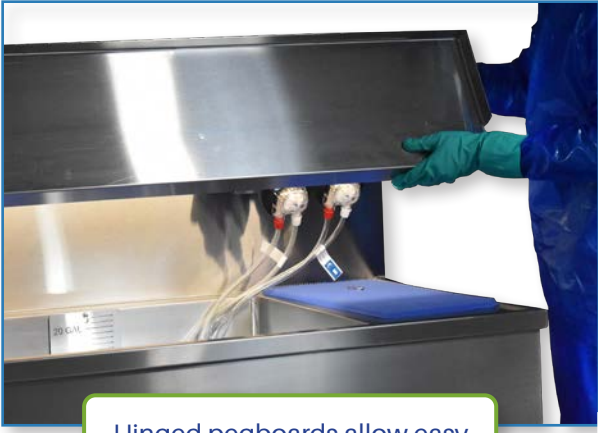
Task lights for heightened magnification capabilities during manual cleaning



Integrated LED basin lighting for leak testing and enhanced visual inspection

Open configure, height-adjustable shelving that allows easy mopping under sinks

Patent pending on EZ Hinge™ Pegboards.



Hinged pegboards allow easy reorganization of accessories, and ability to clean behind pegboards with ease



## PureSteel Xi Reprocessing Sink

- Fixed or height-adjustable
- Customizable packages available
- Allows departments to create a dedicated reprocessing area
- Small footprint
- Can accommodate robotics, MIS, and larger scopes



Waterproof Timer

Automated lumen flushing pumps (see page 5)



**NEW**



### PureSteel Splash Guard

- Provides a clear shield to cover a sink basin, reducing a user's contact with aerosols and contaminated reprocessing fluids. Splash guards can be lifted up when not in use.

QUANTITY	PRODUCT ID#
1 splash guard	PS-SGP-01



### PureSteel Staging Panel

- Create optional and flexible arrangements of additional counter space when staging room is required.
- Each Staging Panel can be placed onto a sink basin to create extended work surfaces for reprocessing.

QUANTITY	PRODUCT ID#
1 staging counter	PS-SC-01
2 staging counters	PS-SC-02

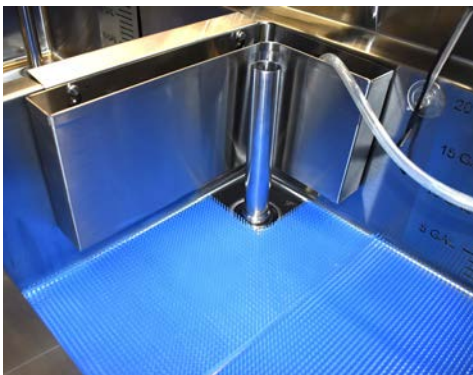
**NEW**



### PureSteel Rinse Sprayer

- DI rinse sprayer provides consistent and copious rinsing of instrument sets and trays using treated water.

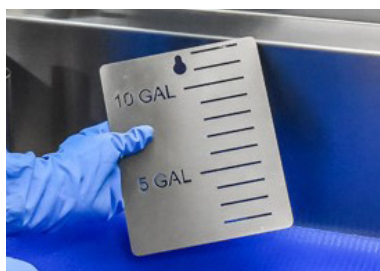
QUANTITY	PRODUCT ID#
1 rinse sprayer with tubing and mounting hook	ASG-11
1 rinse sprayer with adapter base and mounting hook	ASG-11-LT-V250-T1



### PureSteel™ Stainless Steel Solution Tank

- Provide a separate, dedicated space for chemicals and solutions when reprocessing
- Rests on sink partition, so suitable on center partitions or basins only

QUANTITY	PRODUCT ID#
1 tank	PS-SSST-16BM-15PM



### PureSteel Volume Indicator Plate

- Removable, cleanable alternative to sink basin stickers
- Custom made to any stainless steel sink basin size

**NEW**

QUANTITY	PRODUCT ID#
1	PS-C-VL-ETCH



### PureSteel Workflow Plate

- Plates indicate location for reprocessing steps: soak, wash, rinse, or final rinse.
- Removable, cleanable alternative to sink basin stickers

**NEW**

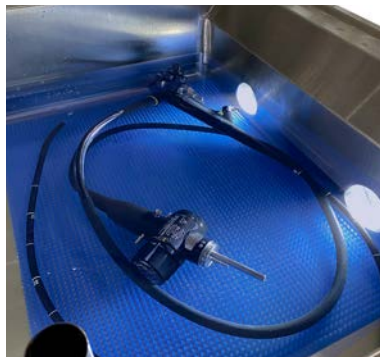
QUANTITY	PRODUCT ID#
1, Wash	PS-C-WS-ETCH
1, Soak	PS-C-SK-ETCH
1, Rinse	PS-C-RS-ETCH
1, Final Rinse	PS-C-FS-ETCH



### PureSteel Telescoping Drains

- Telescoping drains are made of chrome plated brass construction with smooth walls
- Creates a durable, long-lasting drain system for vertically adjusting equipment

QUANTITY	PRODUCT ID#
1 drain	T1512



### LED Basin Lights

- In-basin lighting aids in spotting bubbles during leak testing
- Enhances lighting at the sink, making it easier to perform cleaning tasks and check for quality

QUANTITY	PRODUCT ID#
1	PS-LED-BSN



### Pure LandingPad Silicone Liner

- 20" x 20" silicone sink landing pad to protect delicate instruments, such as endoscopes
- For use in sink basins or counter tops

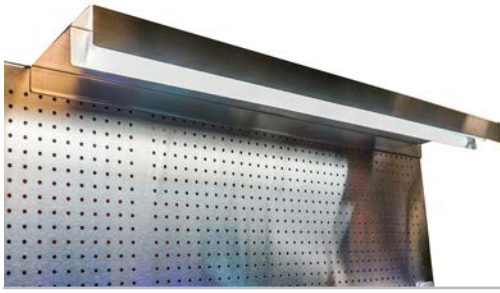
QUANTITY	PRODUCT ID#
1 liner	PLP20x20-01
2 liners	PLP20x20-02
3 liners	PLP20x20-03



### Pure LandingPad™ Surface Liner

- Protects delicate devices and cushions surfaces where expensive endoscopes and other devices are staged for cleaning
- A 3/4-inch thick nitrile rubber foam blend resists hospital-grade cleaning chemicals and disinfectants and will not absorb liquid
- 18" x 24"

QUANTITY	PRODUCT ID#
1 pack (3 liners)	PLPSL-1824-03



### PureSteel Light Hood

- Durable light hood provides high-quality lighting at the sink for optimal visualization of surfaces and soils.

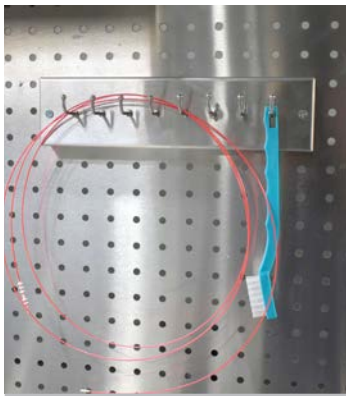
QUANTITY	PRODUCT ID#
1 (4' sink hood)	T-SK-PB-HOOD-04
1 (2' sink hood)	T-SK-PB-HOOD-02
1 (4' table hood)	T-TB-PB-HOOD-04
1 (2' table hood)	T-TB-PB-HOOD-02



### Brush Bath and Shelf

- Allows instruments to soak on a sink pegboard or back wall with a built-in draining system
- Made from stainless steel

QUANTITY	PRODUCT ID#
1 (24")	BBATH-24
1 (12")	BBATH-12



### PureSteel Brush Holder and Organizer

- Organizes cleaning brushes at an easy to reach, ergonomic height for users
- Integrates with existing pegboards and allows up to 8 brushes to be hung

QUANTITY	PRODUCT ID#
1	PS-BRRK



### PureSoak™ Timer

- Water-resistant timer for use on sinks and soak stations
- Highly visible LED digits
- Programmable minutes and seconds which count-down; alarm activates when the programmed time has elapsed

QUANTITY	PRODUCT ID#
1	PSWPT



### Automated Endoscope Reprocessing Rack

- Hangs on a wall; can plug adapter in close to the automated endoscope reprocessor to keep tubes organized
- Can accommodate up to 11 AER connectors

QUANTITY	PRODUCT ID#
1 (Steris rack)	AER-TSO-01
1 (Medivators rack)	AER-TSO-02
1 (ASP rack)	AER-TSO-03
1 (Olympus rack)	AER-TSO-04

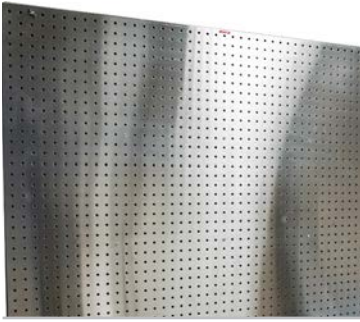


### Bluetooth Speaker

- Connects by bluetooth to phones, computers
- Small profile
- Great for reprocessing sinks, tables

QUANTITY	PRODUCT ID#
1	PS-BTSPEAKER





### PureSteel Pegboard Panels

- Individual pegboard panels for back wall organization
- Install accessories at a comfortable working height and keep counters organized

QUANTITY	PRODUCT ID#
1 (2' x 2' panel)	SSS-PB-2x2
1 (2' x 4' panel)	SSS-PB-2x4

**NEW**



### Leak Tester Shelves

- Shelves which allow for storage of leak testers onto back walls and pegboards
- Veriscan leak tester shelf ideal for larger units, including Veriscan
- Small leak tester shelf ideal for Olympus sized leak testers

QUANTITY	PRODUCT ID#
1, Small Size	PS-SM-LTS
1, Veriscan-size	PS-VS-LTS



### PureSteel Glove Box Holder

QUANTITY	PRODUCT ID#
1 (12"L x 6"H x 4"D)	GBH-01
1 (16"L x 5"H x 2"D)	GBH-02



### PureSteel Wire Baskets

- Organize reprocessing equipment and supplies onto a pegboard at ergonomic height for staff, and create more counter space

QUANTITY	PRODUCT ID#
1 (12"X12"X8")	HP6203
1 (24"X10"X5")	HD26298
1 (12"X6"X6")	HP6209
1 (15"X12"X5/3")	HD26302
1 (24"X12"X4")	HD26297
1 (12"X12"X4")	HP6205
1 (12"X12"X8"/4")	HD26300



### PureSteel 32oz Bottle Holder

- Conveniently keeps bottles organized on a sink pegboard or back wall
- Holds one, two or three 32oz bottles
- Made from stainless steel

QUANTITY	PRODUCT ID#
1 (single holder)	SBH-01
1 (double holder)	DBH-02
1 (triple holder)	TBH-03



### PureSteel™ Gallon Holder

- Conveniently keeps gallon bottles organized on a sink pegboard or back wall
- Holds one, two or three 1-gallon bottles
- Made from stainless steel

QUANTITY	PRODUCT ID#
1 (single holder)	SGH-01
1 (double holder)	DGH-02
1 (triple holder)	TGH-03



### PureStation™ Sink Insert

- Raises working level in deep, pre-existing sink basins to improve employee ergonomics.
- Includes integrated accessories for easier enzymatic maintenance: overflow prevention handles, volume markings, thermometer strip, a chemical dilution well, solution and brush caddies, and a drain filter



QUANTITY	PRODUCT ID#
1 (16"x16")	PS1616
1 (16"x26")	PS1626

“

OSHA Recognized Hazards include:  
*“Using positions that place stress on the body, such as prolonged or repetitive reaching above shoulder height, kneeling, squatting, leaning over a counter...”*

OSHA Ergonomics, Identify Problems

*“Ergonomic factors affecting worker safety and comfort should be considered when designing work spaces in the decontamination area...”*

ANSI/AAMI ST79:2017 3.3.6.1.3

”

## PureStation Dedicated Eye Sink

- Serves as a separate designated cleaning area for channeled ocular surgical devices
- Includes special labels indicating insert for use only with ocular devices; reminder to keep ocular reprocessing separated from other specialties



**pure** **EYE Instruments Only**  
 PROCESSING Discard H<sub>2</sub>O used to clean or rinse after each use  
 Follow device manufacturer's instructions for use  
 www.pure-processing.com (877) 718-6868



QUANTITY	PRODUCT ID#
1 (16"x16")	PS1616-EYE
1 (16"x26")	PS1626-EYE

“  
*Intraocular surgical instruments should be processed separately from general surgical instruments and equipment to reduce the potential for cross-contamination by material or residue from general surgical instruments.*  
 ”

ANSI/AAMI ST79:2017 Annex M, M.2.2.2



## PureStation Transport Lids

- Clear transport lids that safely secure to the top of the PureStation Sink Insert for contained transport

QUANTITY	PRODUCT ID#
1 (16"x16")	PSLID-1616
1 (16"x26")	PSLID 1626



## Digital Thermometer

- Displays cleaning solution temperature
- Programmed to alarm when temperature is out of range

QUANTITY	PRODUCT ID#
1	PS-DTHERMO



## Small Device and Solution Caddies

- 2 solid solution containers and 1 small device container with perforations for easy draining

QUANTITY	PRODUCT ID#
1 kit of 3	DSC-KIT



## PureStation Thermometer Strip

QUANTITY	PRODUCT ID#
1 pack of 10	THERMO-10



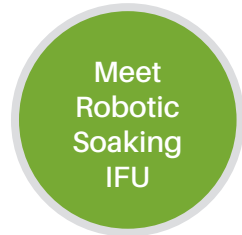
## Drain Plug with Chain

- Tethers drain plug to sink insert

QUANTITY	PRODUCT ID#
1 pack of 5	DPWCHAIN

## PureSteel Mobile Soaking Station

- Create dedicated spaces for soaking during peak reprocessing time
- Built on casters for easy transport
- Create extra sink spaces for reprocessing, or establish dedicated areas for specific instruments
- Easily accommodates robotic instruments, scopes, or other longer instrumentation
- Back wall pegboard organizes equipment at the area of pre-cleaning
- Features ball valve for draining to floor drain; sink hoppers



*Optional accessories to make each station dedicated to its appropriate use (robotic flushing, soaking scopes, etc.)*



QUANTITY	PRODUCT ID#
1 (34"x22")	PS-MSSPB-34x22
1 (optional faucet kit)	MSS-FSNK-01



## PureStation Mobile Cart

- Enables point-of-use pre-cleaning
- Can be stored out of the way and brought out at peak processing hours as an additional sink station
- Can be used to establish a separate dedicated area for specified instruments, such as eyes
- *Must be used with the PureStation Sink Insert*



*Great for separating ocular device reprocessing in a small, mobile footprint*



QUANTITY	PRODUCT ID#
1	PSCART-1626
1 (ball valve kit for draining)	PSBV-1KIT

## PureSteel XL Transport Container Cart

- Provides a secure, dedicated space to horizontally soak instruments
- Also serves as a sealed soaking station for facilities lacking adequate soaking space
- Organizational back wall allows for installation of the FlexiPump Independent Flushing System and other accessories
- Under-shelf allows for additional storage
- XL Transport Containers purchased separately

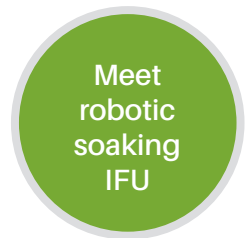


QUANTITY	PRODUCT ID#
1 Cart	XL-TRSP-CART



## PureSteel XL Transport Container Tiered Cart

- Provides a secure, dedicated space to horizontally soak or transport in up to four InstruSafe XL Transport Containers
- XL Transport Containers purchased separately



QUANTITY	PRODUCT ID#
1 Cart	XL-4TIER-CART



## InstruSafe® XL Transport Container

- Creates a dedicated space for horizontally soaking robotic instruments
- Dedicated dry erase "soak start time" space on cover
- Inner gasket and strong silicone latches reduce spills
- Quick-drain feature — no need to tip container to drain



QUANTITY	PRODUCT ID#
1 (w/ drain)	XL-TRSP-DR
1 (w/out drain)	XL-TRSP

## PureSteel Ergonomic WorkStations

- Optional tabletop light provides illumination for inspection of sterile wrap materials
- Height-adjustability allows technicians to perform tasks while standing or seated
- Wide catalog of accessories, from monitors to shelving, build tables to their needs and use
- Optional, fully customizable back walls organize accessories, power cords and computers at the most ergonomic height for technicians; adjust up & down as the table height adjusts
- Wide counter space provides more room for larger instruments and wraps
- Equipped with eight electrical outlets and cord management
- Standard sizes: 60", 72" and 78" lengths
- Custom sizes available



Contact us for a consultation

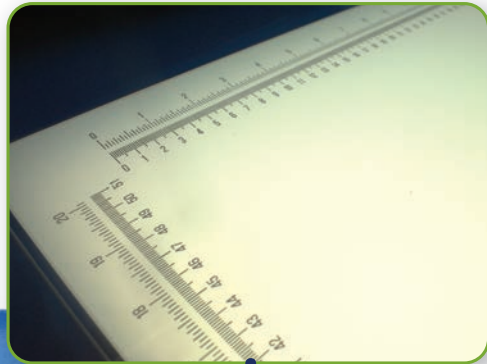
877.718.6868

sales@pure-processing.com

## Table Acrylic Kit w/ Ruler

QUANTITY	PRODUCT ID#
1 Acrylic Kit	PS-TB-LGHT-ACRYLICINSERT-RL

Tables available in various configurations, according to the department layout and workflow.



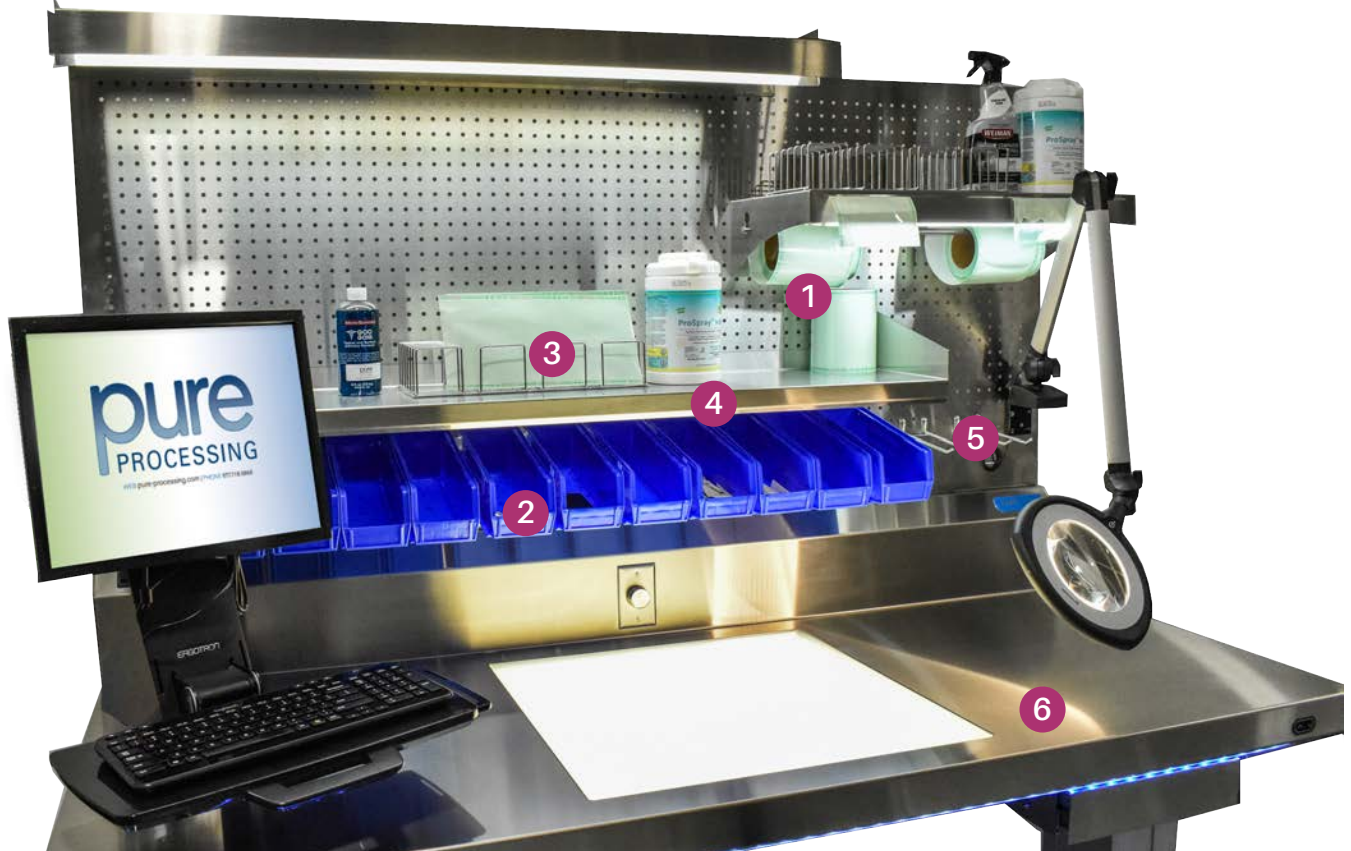
Peel pouch rail allows for storage and easy access of peel pouch materials

Bin rail allows for storage and easy reach of materials



Pull-out counter slides out when additional work area is needed





### 1. PureSteel Prep and Pack Organization Rail

- Hang peel pouch rolls, stickers, and other sterilization materials on a rail for easy dispensing and filling

QUANTITY	PRODUCT ID#
1 rail shelf	PS-TB-RAIL

### 2. PureSteel Shelf Bins and Plastic Shelf Bin Rail

- Organization bins for prep and pack tables or pegboard panels
- Requires rail for mounting
- Available in: 5.5" W x 11"L x 5"H

1, 24" blue bin rail	PS-PSBR-24X3
1, 5.5"W bin	PS-PSB-5.5X11X5

### 3. PureSteel Peel Pouch Rack Shelf

- Vertically stores and organizes pre-cut peel pouch packets on a back wall shelf

1, 5 slot peel pouch	PS-PPRS-05
1, 8 slot peel pouch	PS-PPRS-08

### 4. PureSteel Lighted Prep and Pack Shelves

- Available in 2', 3' or 4'
- All shelves include built-in light bars for increased illumination underneath

1 (24" shelf)	PS-SFL-24X12
1 (36" shelf)	PS-SFL-36X12
1 (48" shelf)	PS-SFL-48X12

### 5. PureSteel Pegboard Hooks

- Hang accessories from pegboards; hardware-free installation for rearrangeable layouts

Pack of 5	PS-HOOK
-----------	---------

**NEW**

### 6. Tabletop Ruler

- Accurately measure packaging and assembly materials
- Available in custom lengths
- Can be printed on acrylic replacement panels



1	PS-TB-RULER
---	-------------





Customizable options and back walls available



## PureSteel Wrap Inspection Table

- Rack allows for organization of multiple-sized wraps
- Tabletop light assists in visual inspection of wrap materials
- Optional height-adjustability relieves strain on technicians and meets ergonomic guidelines
- Custom sizes available



## PureSteel Mini Inspection Table

- Tabletop light assists in visual inspection of wrap materials
- Small footprint
- Casters allow for mobility
- Bottom shelf creates space for storage of materials

QUANTITY	PRODUCT ID#
----------	-------------

1	PS-MN-IN-TBLE
---	---------------

## PureSteel Workstation

- Provide dedicated work surfaces for
  - Visual inspection
  - Biologicals
  - High- or low-temp sterilization tables
- Can be height-adjustable for greater staff ergonomics
- Organizational back wall allows a wide catalog of accessories for reprocessing tasks



QUANTITY	PRODUCT ID#
----------	-------------

1 (fixed height)	PC-VSSTATION
------------------	--------------

1 (height-adjustable)	PC-HA-VSSTATION
-----------------------	-----------------



## PureSteel Stainless Steel Side Table

- Fixed height
- 6" back splash
- Custom sizes available

# The Importance of Visual Inspection

When it comes to reusable channeled medical devices, visual inspection of external and internal surfaces is a patient safety must.

After manual cleaning, visually inspect the endoscope and its accessories. Visual inspection provides additional assurance that the endoscope and its accessories are clean and free of defects. Complex devices such as flexible endoscopes may require the use of lighted magnification or additional methods to assist with the inspection process.

- [www.cdc.gov/hicpac/pdf/flexible-endoscope-reprocessing.pdf](http://www.cdc.gov/hicpac/pdf/flexible-endoscope-reprocessing.pdf)

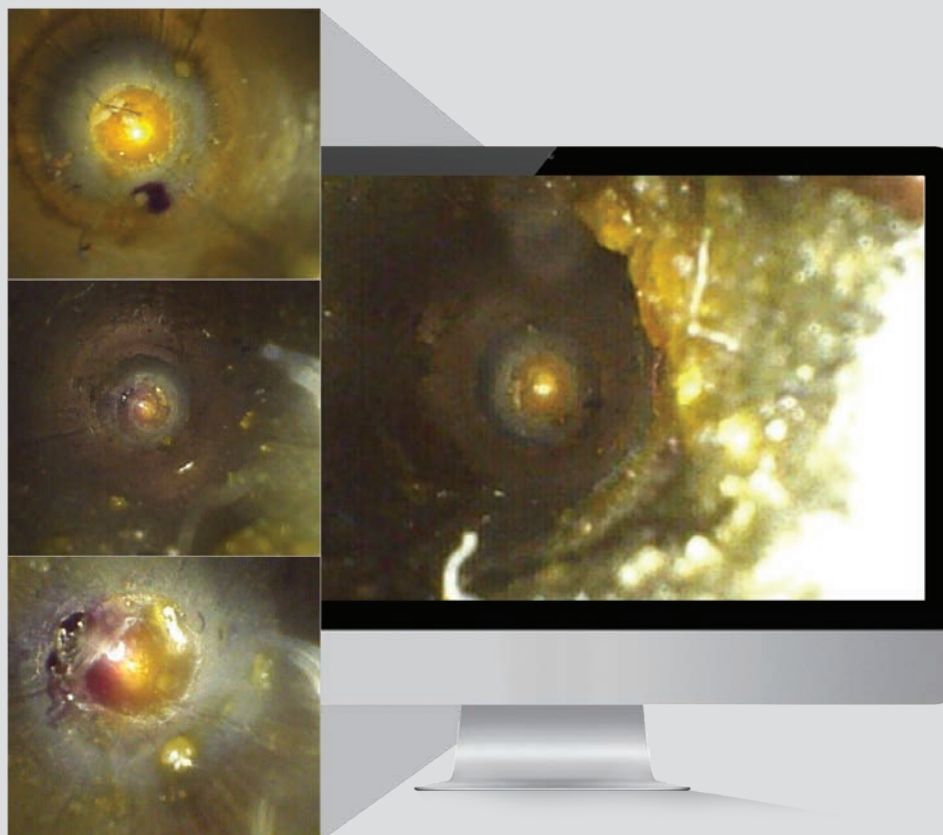
12.4.2: Tools such as video borescopes of an appropriate dimension (length and diameter) may be used to visually inspect the internal channels of some medical devices.

- [ANSI/AAMI ST91:2017](#)

Regular internal visual inspection of lumens and channels helps assure early detection of damage and residual debris.

Careful visual inspection should be conducted to detect the presence of any residual soil. Inspection using magnification and additional illumination might identify residues more readily than the unaided eye...

- [ANSI/AAMI ST91: 2017](#)

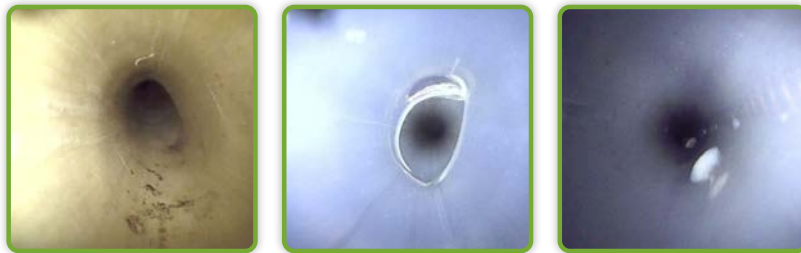


VII.a: Failure to correctly clean, inspect, or process an item may lead to transmission of pathogenic microorganisms from a contaminated device and create a risk for patient injury or infection.

- [2017 AORN Guidelines - Flexible Endoscopes](#)

VII.c: ... An endoscope that appears clean may harbor debris that cannot be seen without magnification. Lighted magnification may increase the ability to identify residual soil or damage.

- [2017 AORN Guidelines - Flexible Endoscopes](#)



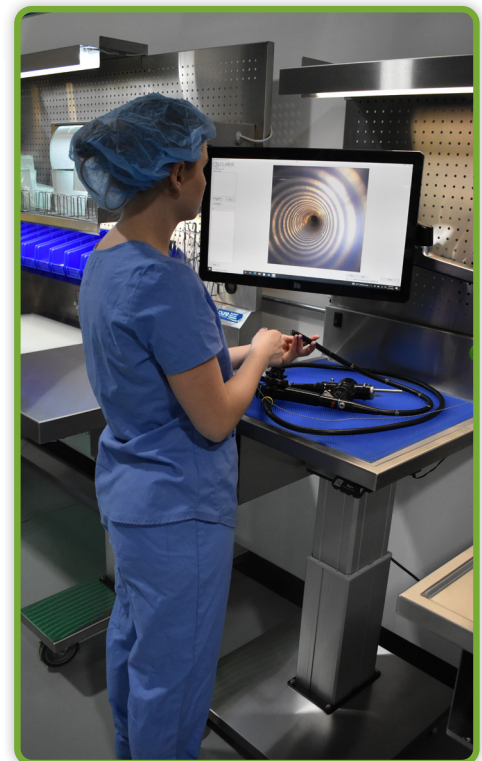
## PureClear™ Inspection Scopes

- Allows technicians and nurses to visually inspect lumens and devices for debris and damage
- Inspects channels, connection points, distal tips, and spaces behind elevator channels
- USB Control Box provides video and photo capture for documentation
- HDMI Control Box gives inspection capabilities without the need of a PC or computer

QUANTITY	PRODUCT ID#
(1) 1.83mm, Length 60cm	CB2-60
(1) 1.83mm, Length 110cm	CB2-110
(1) 1.83mm, Length 200cm	CB2-200
(1) 1.06mm, Length 110cm	CD1-110
PureClear™ Dual Inspection Control Module, USB Output	CD-USB
PureClear™ Dual Inspection Control Module, HDMI Output	CD-HDMI

## PureClear Visualization Station

- Provide a dedicated space for visual inspection or work
- Can be height-adjustable for greater staff ergonomics
- Can be used on the decontamination side of the department to visually inspect items before continuing with further reprocessing
- Easily integrate monitors for larger visual displays
- Standard visualization station available in 36" x 30"
- Mini visualization station is available in 24" x 30"



QUANTITY	PRODUCT ID#
1 (fixed height)	PC-VSSTATION
1 (height-adjustable)	PC-HA-VSSTATION
1 (mini fixed height)	PC-MINI-VSSTATION
1 (mini height-adjustable)	PC-HA-MINI-VSSTATION



## Ergotron® Wall Mounts

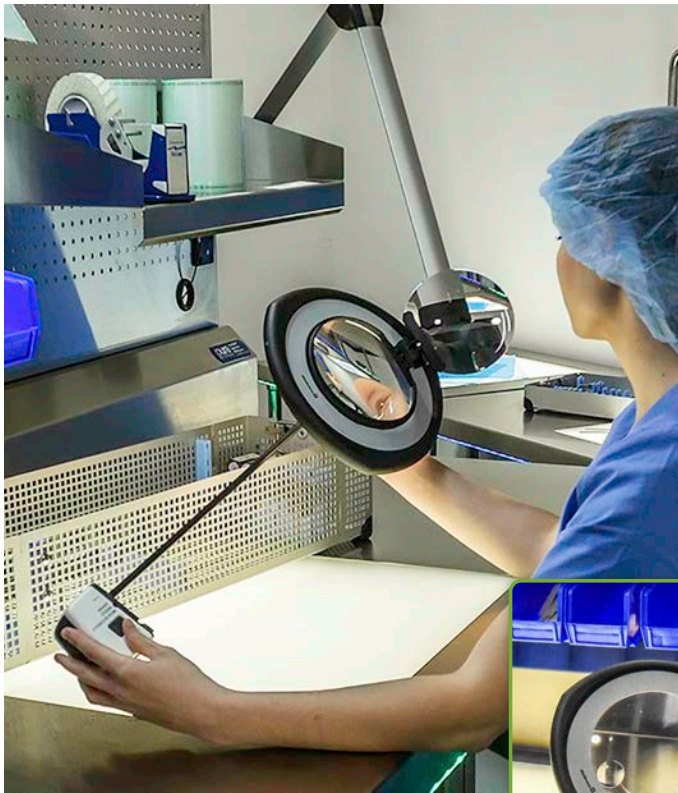
- Mount tablets and monitors onto the back of pegboards and walls

QUANTITY	PRODUCT ID#
1 (All-in-One Ergotron Mount Arm)	PC-VS-ARM-S-KYBD
1 (ErgoTron Wall Mount Arm)	PS-VS-ARM
1 (ErgoTron LX Wall Mount Keyboard Arm)	PC-VS-KYBD
1 (ErgoTron Wall Arm Desk C-Clamp)	PC-VS-ELOARM-DESK
1 (Peerless Tilt Wall Mount)	PC-VS-ST630P
1 (Ergotron Wall Mounted Handheld Scanner Mount)	PC-WALL-HSM
1 (Ergotron® Dual Monitor & Handle Kit)	PC-VS-DUAL
1 (Ergotron® Mini Desk Arm)	PC-VS-ARM-DESK
1 (Monitor Pole Arm)	PC-VS-ARM-POLE
1(Ergotron® VESA Scanner Shelf)	PC-VS-VSS

## Elo® Touchscreen Monitor

- Well-suited for use in high traffic or harsh environments

QUANTITY	PRODUCT ID#
1 (15" monitor)	PS-VS-ELO-15
1 (20" monitor)	PS-VS-ELO-20
1 (22" monitor)	PS-VS-ELO-22
1 (24" monitor)	PS-VS-ELO-24



### PureSteel Magnification Task Light

- Up to 3x magnification
- Features on/off switch and dimmable lighting
- 31" or 39" arm lengths
- Lights come with c-clamps standard; L-bracket option sold separately
- Optional, 6 diopter lens increases total task light visibility to 2.25x magnification



QUANTITY	PRODUCT ID#
1 (39"L)	PS-LED-MG-LGHT-SS-39
1 (31"L)	PS-LED-MG-LGHT-SS-31
1, L-Bracket	PS-LED-MG-WB
1 (6D lens)	PS-LED-MG-LENS-6D



### PureSteel Halogen Magnifier Task Light

- 2x magnifier assists staff in visual inspection of instrument tips and surfaces
- Targeted illumination with a 27" flexible gooseneck arm
- Water resistant to work in moist environments

#### For pegboard installation

QUANTITY	PRODUCT ID#
1	PS-HAL-LIGHT

#### Mounting Options (non-pegboard)

QUANTITY	PRODUCT ID#
1, L-Bracket	PS-LGHT-BRCKT
1, C-Clamp	C-CLAMP-LGHT



### Intel NUC Mini PC Kit

- Kit provides PC hard drive capabilities for touch pads and monitors.

QUANTITY	PRODUCT ID#
1	PC-NUC-PC-KIT

### Flexible Device Mount Set

- Includes the flexible arm, super clamp, and nano clamp

QUANTITY	PRODUCT ID#
1 (control model)	FD-CM

## VR™ Sleeve Gloves

- Latex free sleeve gloves provide 29 inches of coverage
- Ultimate protection while cleaning instruments
- Can be reused throughout the day
- Puncture- and tear-resistant



VHA Directive 1116(2):  
 "(c) Heavy duty, impervious decontamination gloves must be worn (not regular patient exam or surgical gloves). Gloves must be a minimum of 12 mils in thickness. Gloves must have a long cuff that extends beyond the wrist (at least 12 inches in length) and must be appropriately sized to facilitate dexterity."

### 50 SERIES

- Glove length: 28"
- Glove thickness: 11 mil
- Sleeve thickness: 4 mil
- Glove lining: No

SIZE	QUANTITY	PRODUCT ID#
Extra Small	1 box of 50	SGXS-50
Small	1 box of 50	SGS-50
Medium	1 box of 50	SGM-50
Large	1 box of 50	SGL-50
XL	1 box of 50	SGXL-50

### 80 SERIES

- Glove length: 28"
- Glove thickness: 15 mil
- Sleeve thickness: 4 mil
- Glove lining: Yes

SIZE	QUANTITY	PRODUCT ID#
Extra Small	1 box of 50	SGXS-80
Small	1 box of 50	SGS-80
Medium	1 box of 50	SGM-80
Large	1 box of 50	SGL-80
XL	1 box of 50	SGXL-80



## Gloves taking on water?

Strong, durable and latex free protective apparel for splash protection.

**pure**  
PROCESSING

## EDUCATIONAL RESOURCES



As medical devices evolve, standards, guidelines and manufacturer's written instructions for use (IFU) are constantly being refined. Pure Processing is happy to provide resources for personnel to enhance their education and in-servicing needs.

Visit our education page for FREE continuing education credits (CEs), training and in-service information, and education and association links.

[www.pure-processing.com/education](http://www.pure-processing.com/education)

Our blog also features educational content to help departments meet compliance and enhance staff and patient safety.

[www.pure-processing.com/blog](http://www.pure-processing.com/blog)

## PLANNING A RENOVATION PROJECT OR BUILD-OUT?

Pure Processing develops and manufactures solutions for easy, fast, safe and effective medical device reprocessing.

### Our process:

We offer expertise and collaborative services to architects, builders and department managers in the form of:

- Workflow deep dives to assess current and future needs, staff safety and compliance challenges
- Assessment of project scope, needs and expectations
- Pre-installation before shipping, to reduce burden on facilities and management, and install equipment faster
- Educational offerings throughout the process

Pure Processing expertise and products help organizations achieve three key objectives:



Optimal Patient Outcomes



Enhanced Operational Efficiencies



Reduced Costs

“

*When doing a project, it's important to find a true partner. Pure Processing is trying to elevate technicians and the reprocessing profession. Things happen, things come up throughout a project; this truly felt like a partnership between [us] and Pure Processing. That's value added beyond the products.*

SPD Manager, Chicago, IL

”

Let us help you with your next project or renovation

877.718.6868

[sales@pure-processing.com](mailto:sales@pure-processing.com)



**Facilities featured:**

- Advocate Good Shepherd
- Boston Medical
- Lowell General
- Memphis VA Medical Center

# pure

PROCESSING

130 East St. Charles Road  
Unit C  
Carol Stream, IL 60188



For more information, please call or visit:

**877.718.6868**

[sales@pure-processing.com](mailto:sales@pure-processing.com)

[www.pure-processing.com](http://www.pure-processing.com)

Visit us on our social media sites!

